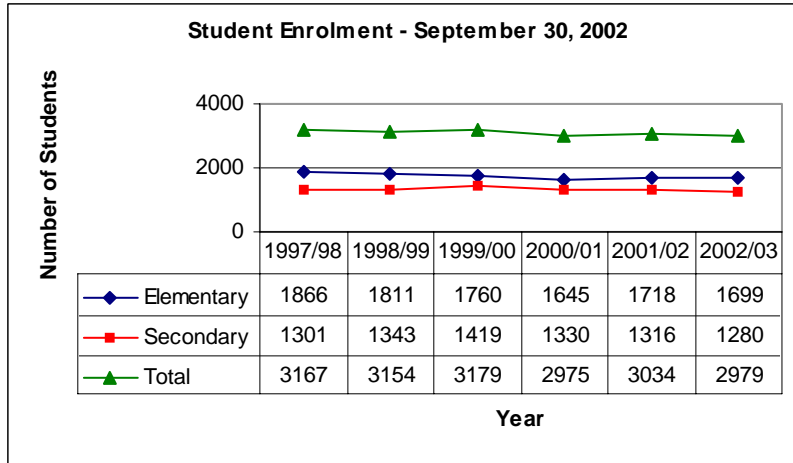


FIRST NATIONS EDUCATION REPORT 2002/03

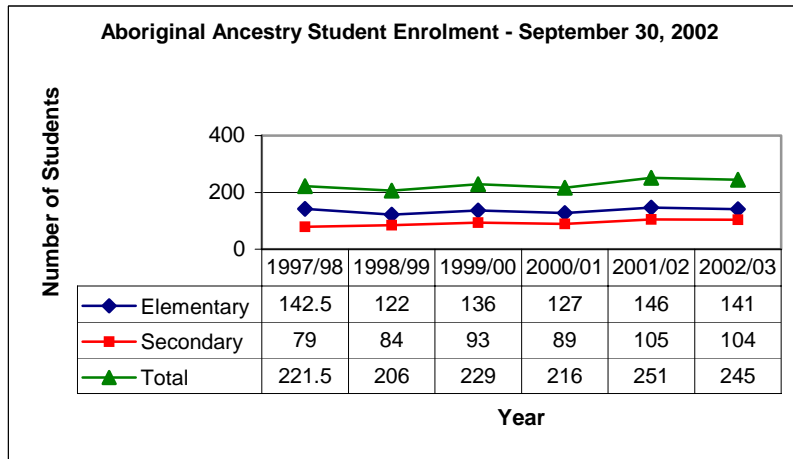
APPENDIX A: DISTRICT DEMOGRAPHIC DATA

ENROLMENT

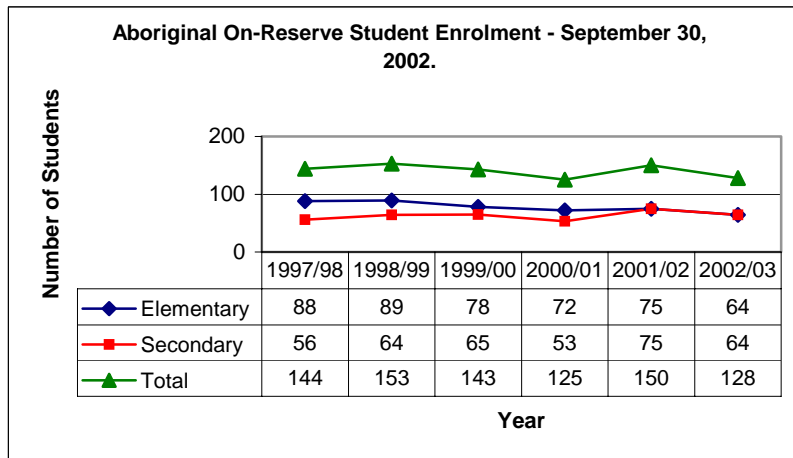


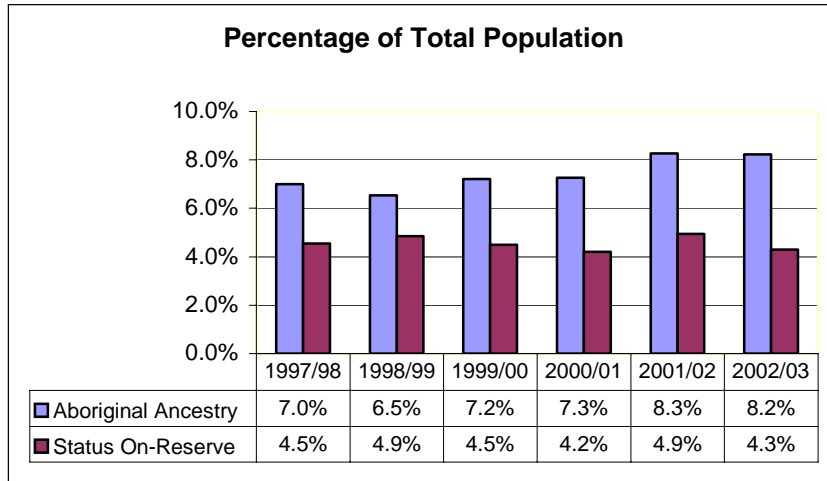
Comments:

The District experienced an enrolment drop of fifty-five students from September 2001 to September 2002. Aboriginal Ancestry student enrolment for the district was down slightly (6 students) during the same period. This seems to parallel the trend for the district.



The largest decline of any one group was that of the On-Reserve students. This group dropped by 22 students or 14.7%.



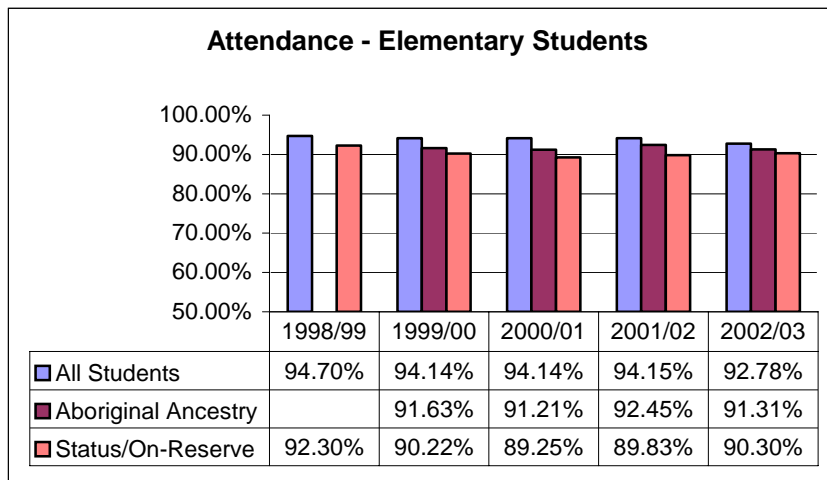


Comments

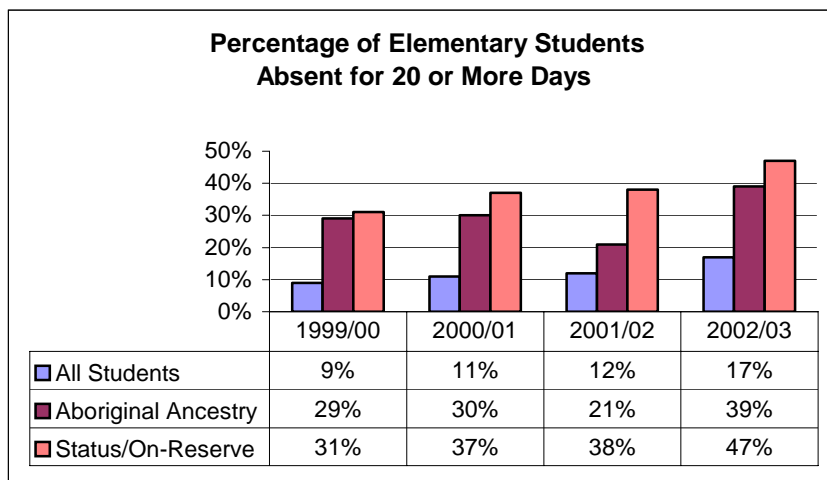
Since September 1997 the percentage of Aboriginal Ancestry students in School District No. 53 has increased by 1.2 %.

The percentage of Status On-Reserve students had risen to 4.9% in 2001/02, however in 2002/03 this group declined back to 4.4 % of the total District enrolment.

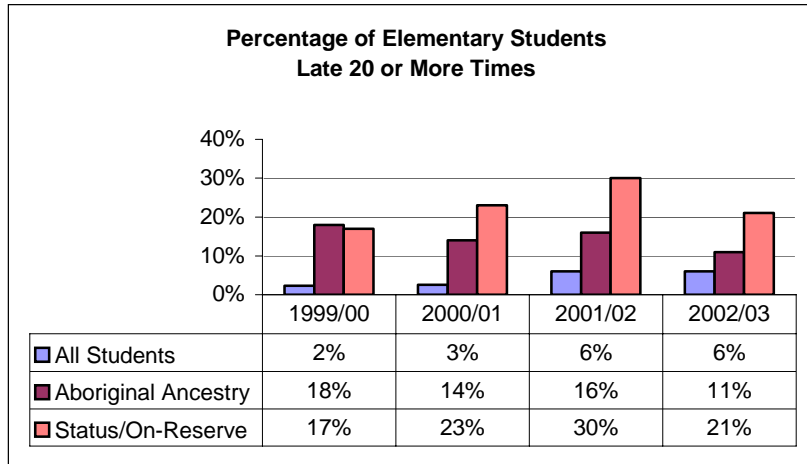
ATTENDANCE



At the elementary level, the attendance rates of all students and Aboriginal Ancestry students dropped slightly over the past year. The attendance of Status/On-Reserve students' was slightly up over the 2001/02 school year.

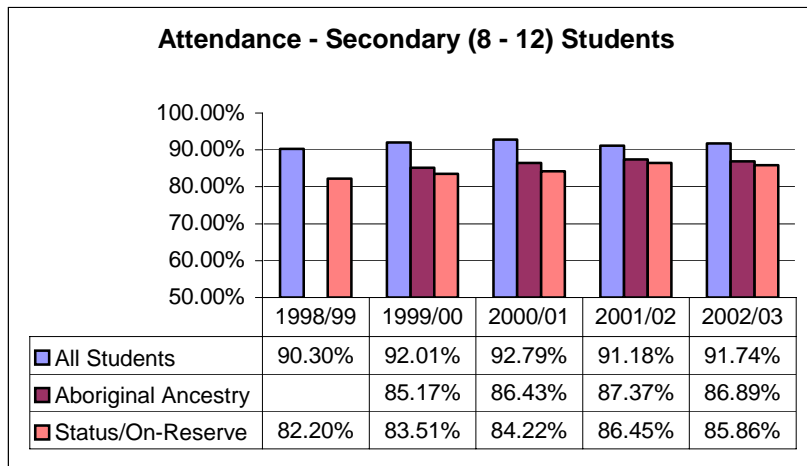


The number of elementary students absent for 20 or more days continues to rise for all groups, however it is a particular concern for Aboriginal groups.

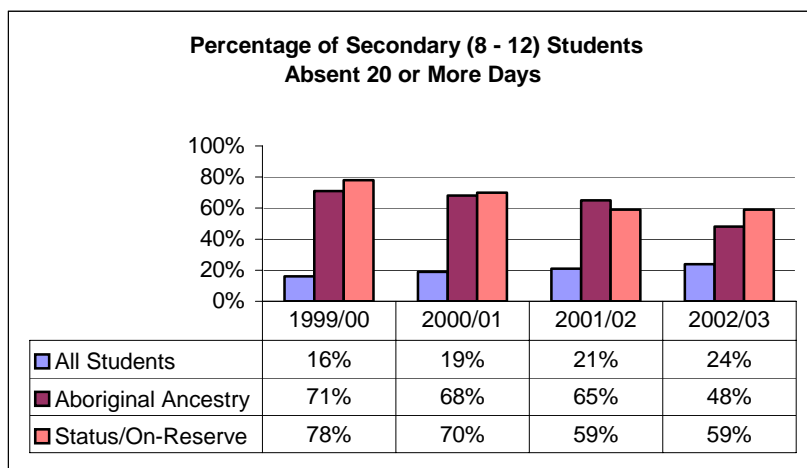


Comments

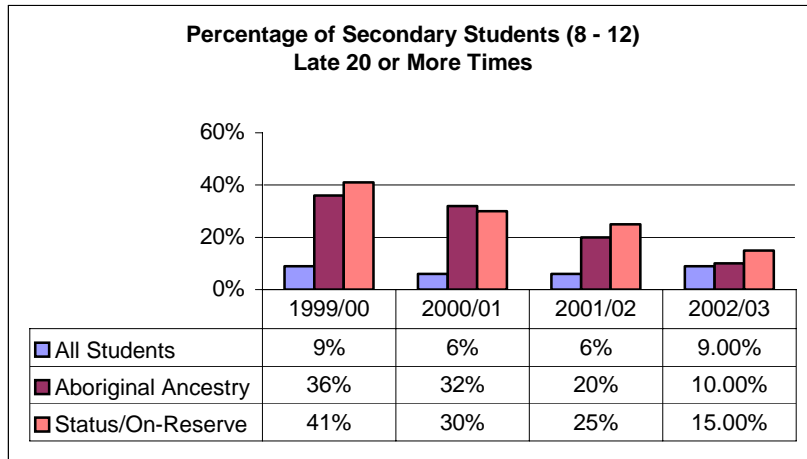
The number of students arriving late for school was down for all categories. Combined with the previous data, does this indicate that students who might have arrived late are deciding not to come to school?



The attendance by all Aboriginal groups at the secondary level was down slightly.



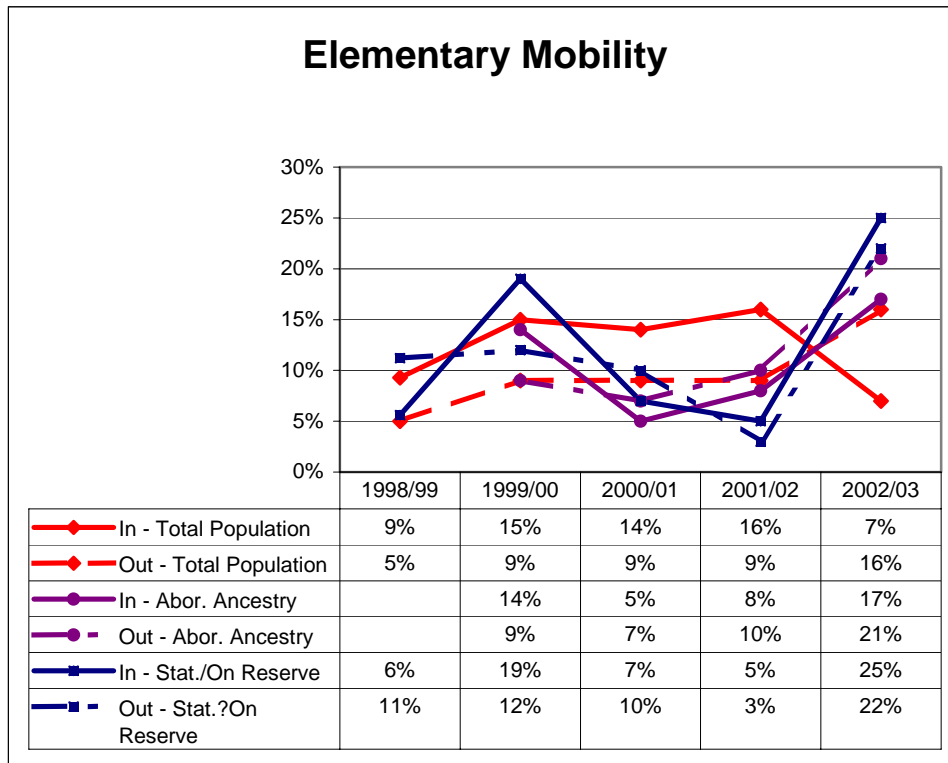
The percentage of Secondary Aboriginal Ancestry students absent 20 or more days has improved by 17%.



Comments

At the secondary level, there has been a steady improvement in the number of students late 20 or more times for both Aboriginal groups. Combined with the previous data, this is a positive trend.

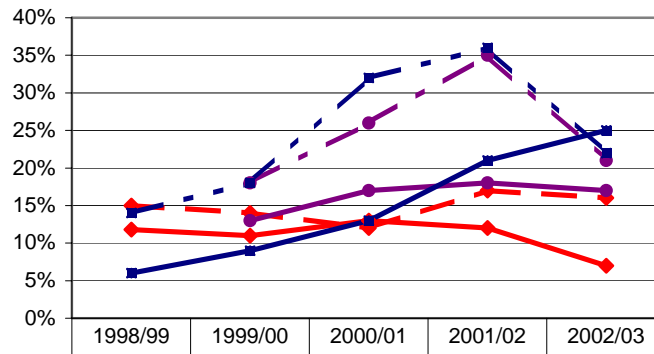
MOBILITY



Mobility is as of September 1st of each year. It is the number of students coming into and leaving the school between September 1 and June 30.

Elementary mobility rates seem to be fairly consistent from year to year for all groups. This year is an exception with rates close to or over 20% for Aboriginal groups.

Secondary Mobility



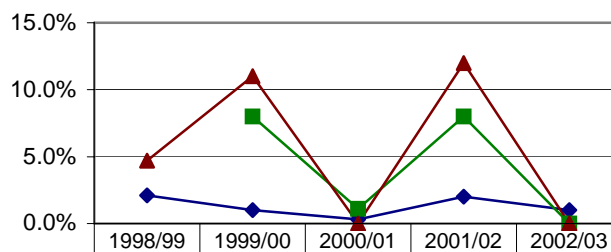
In - Total Population	12%	11%	13%	12%	7%
Out - Total Population	15%	14%	12%	17%	16%
In - Abor. Ancestry		13%	17%	18%	17%
Out - Abor. Ancestry		18%	26%	35%	21%
In - Stat./On Reserve	6%	9%	13%	21%	25%
Out - Stat./On Reserve	14%	18%	32%	36%	22%

Comments

Secondary mobility for the general population is fairly constant from year to year.

The mobility for the Aboriginal populations had been steadily increasing over the past few years but declined this past year. The trend of more students leaving the schools than are entering over the school year continues.

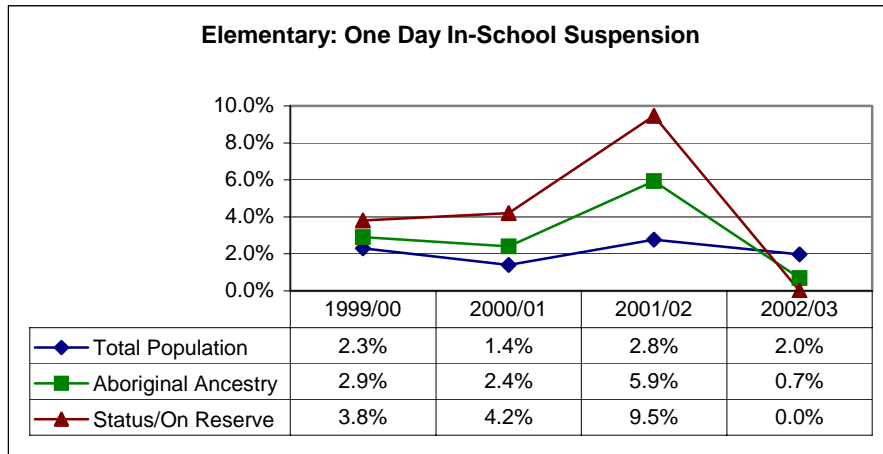
Students Withdrawn From School by an Administrator



Total Population	2.1%	1.0%	0.3%	2%	1.0%
Aboriginal Ancestry		8.0%	1.1%	8%	0.0%
Status/On Reserve	4.7%	11.0%	0.0%	12%	0.0%

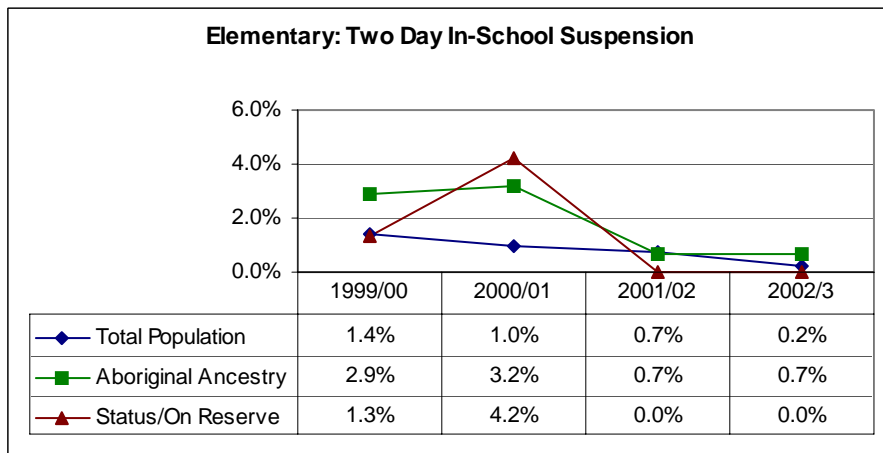
The number of students withdrawn from school by an administrator seems to be sporadic from year to year. Very few students (1%) were withdrawn in 2002/03.

DISCIPLINE

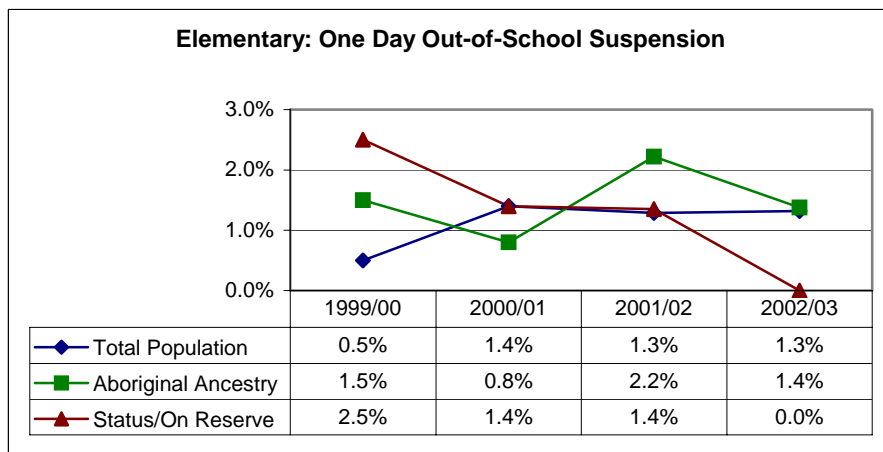


Comments:

It is important to note when looking at Discipline trends, the results can be skewed by a small number of students who repeatedly get suspended. It is not unusual for a student to be represented up to five or six times in this data. The number of repeat offenders for the general elementary population was 10 during the 2002/03 school year. This was down from 20 the previous year. Both Aboriginal Ancestry and Status/On Reserve groups had no repeat offenders.



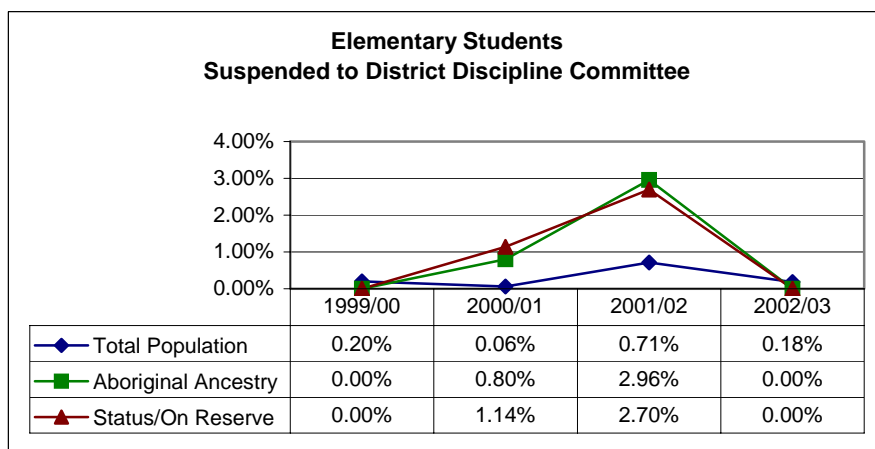
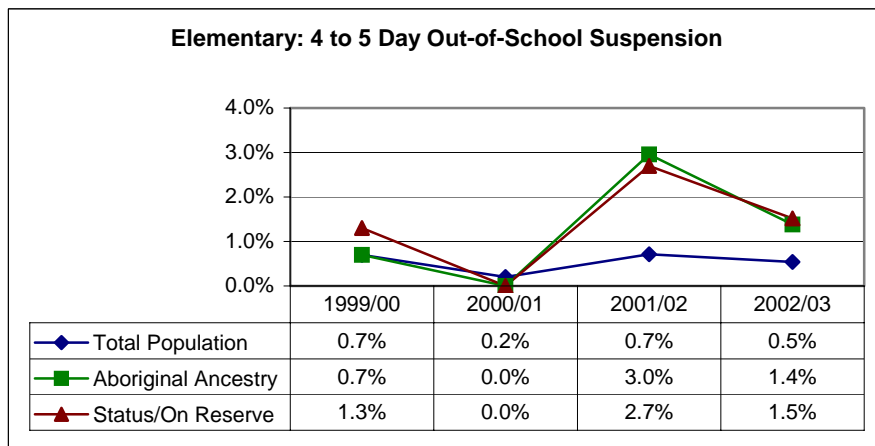
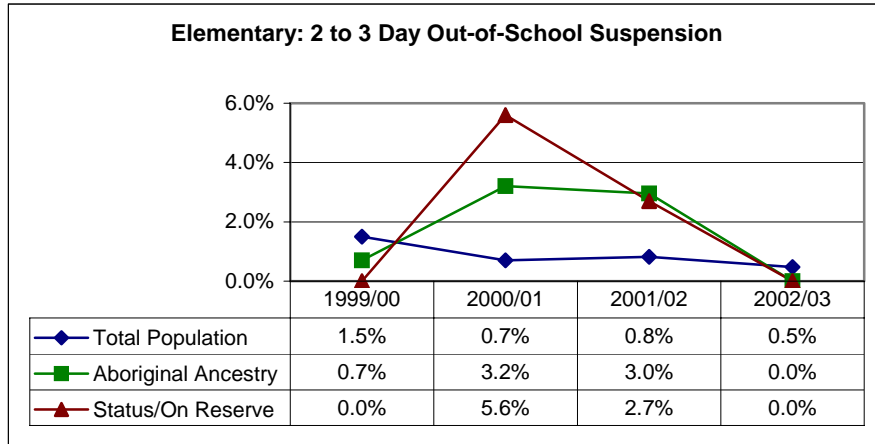
The percentages, therefore, represent the number of disciplinary actions in relation to population numbers and do not represent the actual number of students being disciplined.



Elementary schools saw a decrease in all aspects of suspensions for all categories. The trend for Aboriginal groups was very positive.

Out of School suspensions showed a decrease for all groups.

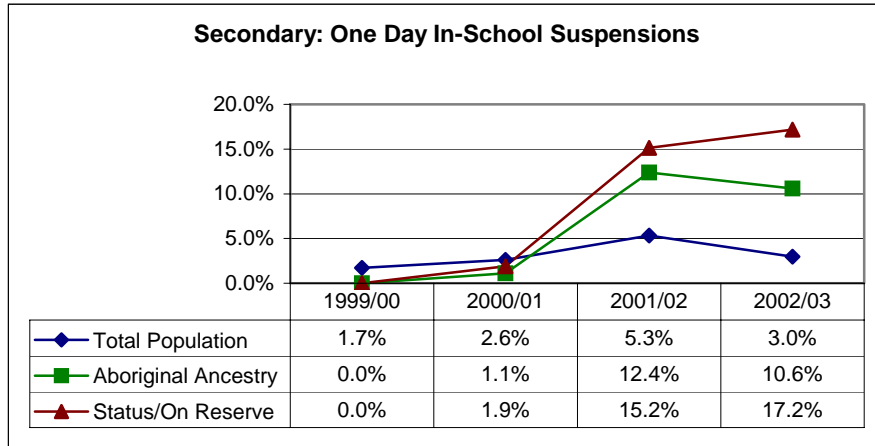
Comments:



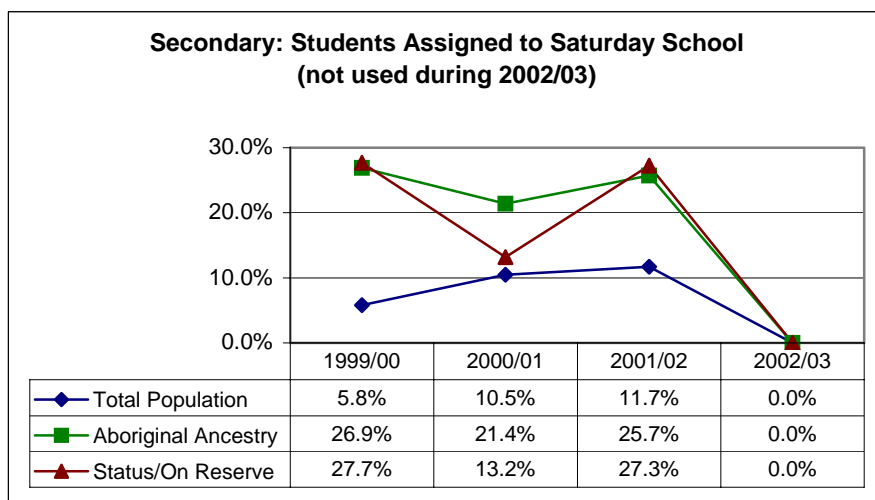
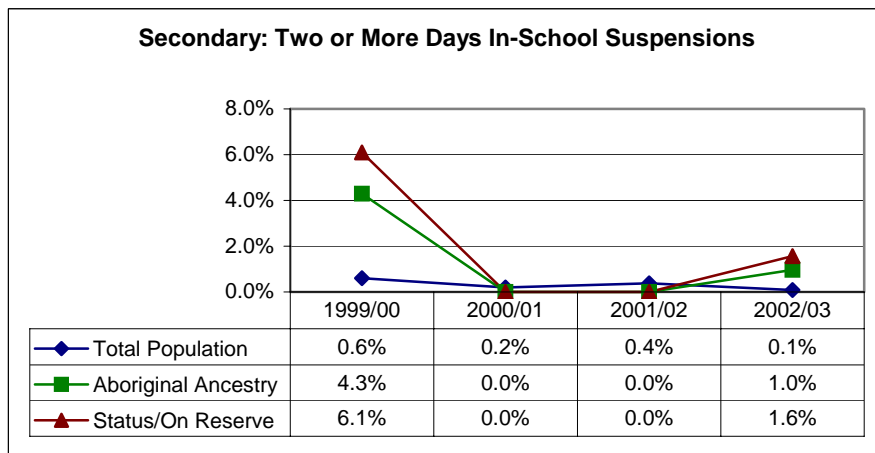
Elementary Students suspended to the District Discipline Committee dropped to outstanding levels.

Only in the cases of in-school and 4 - 5 day out-of-school suspensions did the number of Aboriginal students receiving disciplinary action continue to be over represented.

Comments

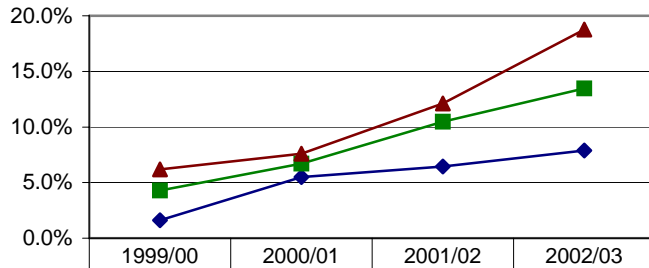


One Day In-School suspensions across the district stayed reasonably stable, with a slight increase for Status/On-Reserve students.



Saturday school was not in use during the 2002/03 school year.

Secondary: 1 Day Out of School Suspension

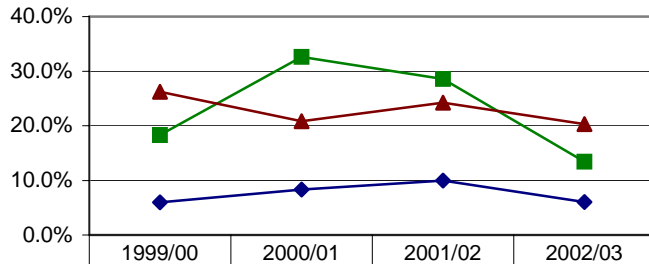


	1999/00	2000/01	2001/02	2002/03
◆ Total Population	1.6%	5.5%	6.5%	7.9%
■ Aboriginal Ancestry	4.3%	6.7%	10.5%	13.5%
▲ Status/On Reserve	6.2%	7.6%	12.1%	18.8%

Comments

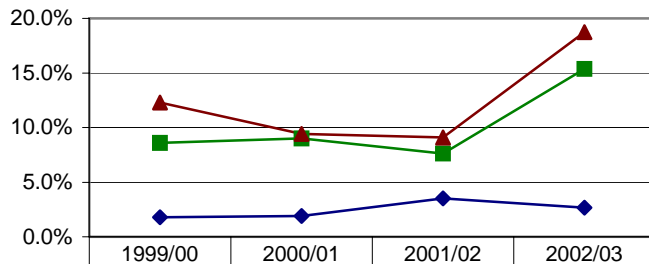
There was a general increase in One Day Out of School suspensions for all groups once again. Two to three day Out of School suspensions declined for all groups.

Secondary: 2 or 3 Days Out of School Suspension



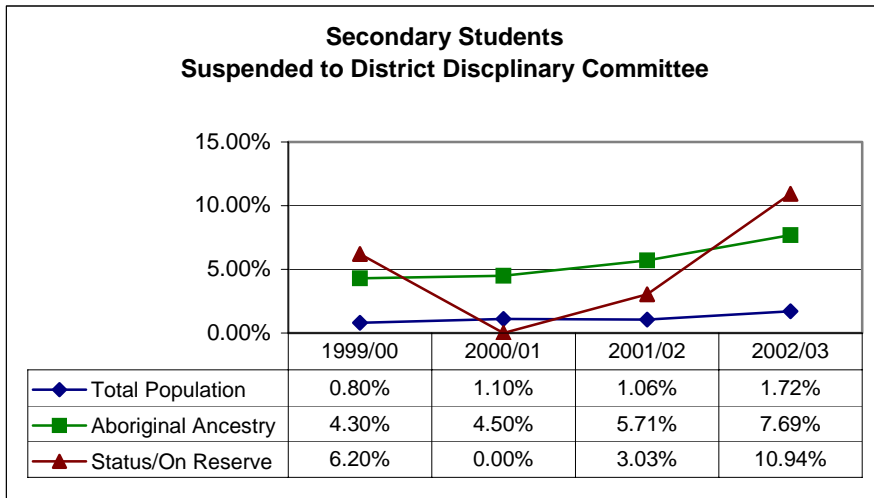
	1999/00	2000/01	2001/02	2002/03
◆ Total Population	6.0%	8.3%	10.0%	6.0%
■ Aboriginal Ancestry	18.3%	32.6%	28.6%	13.5%
▲ Status/On Reserve	26.2%	20.8%	24.2%	20.3%

Secondary: 4-5 Days Out of School Suspension



	1999/00	2000/01	2001/02	2002/03
◆ Total Population	1.8%	1.9%	3.5%	2.7%
■ Aboriginal Ancestry	8.6%	9.0%	7.6%	15.4%
▲ Status/On Reserve	12.3%	9.4%	9.1%	18.8%

After a steady decline in 4 – 5 day out-of-school suspensions for Aboriginal groups over the previous two years, there was a sharp rise in 2002/03



Comments

Suspensions to the District Discipline Committee at the secondary level increased for all groups once again in 2002/03.