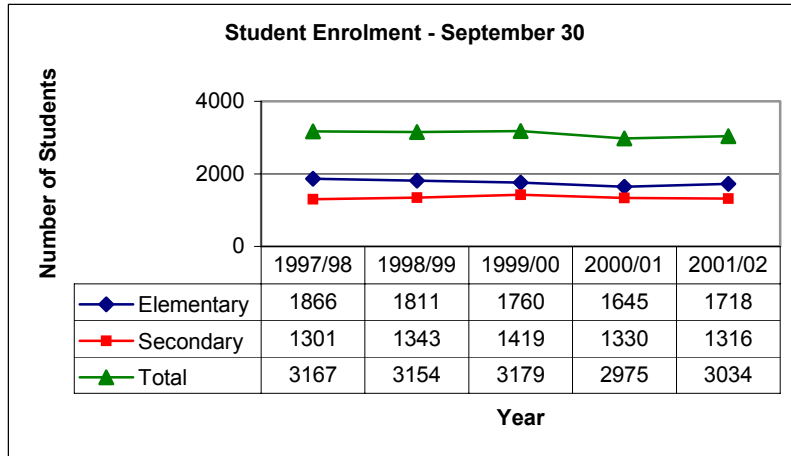


FIRST NATIONS EDUCATION REPORT 2001/02

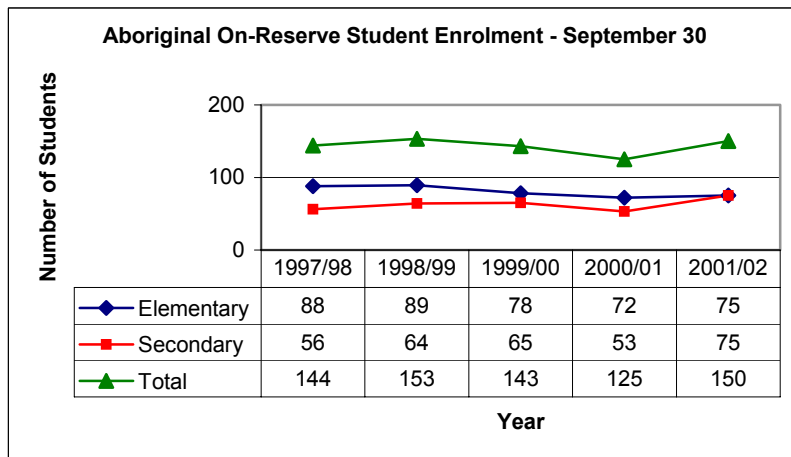
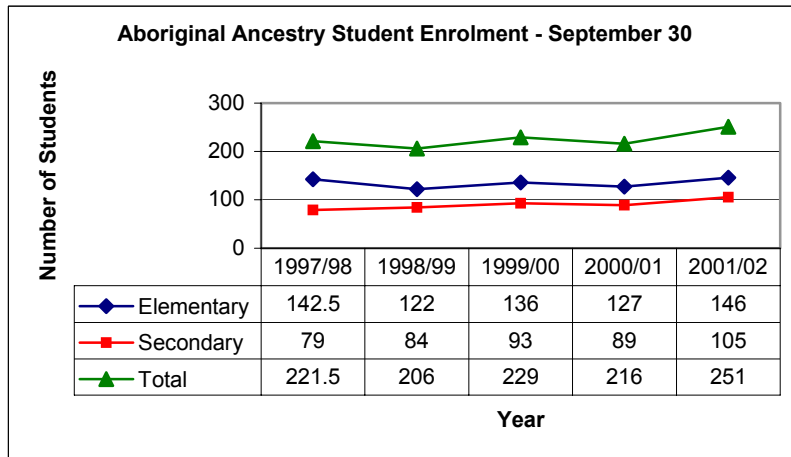
APPENDIX A: DISTRICT DEMOGRAPHIC DATA

ENROLMENT

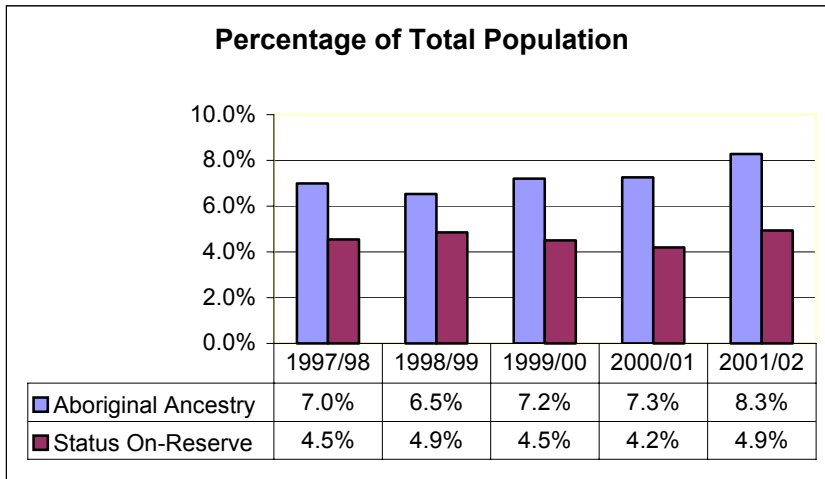


Comments:

There was a significant increase in Aboriginal Ancestry student enrolment for the district from September 2000 to September 2002. This seems to parallel the increase in total students in the district. The increase in Aboriginal Ancestry students over this time was 16.2 % while the total student enrolment increase was 2.0 %.



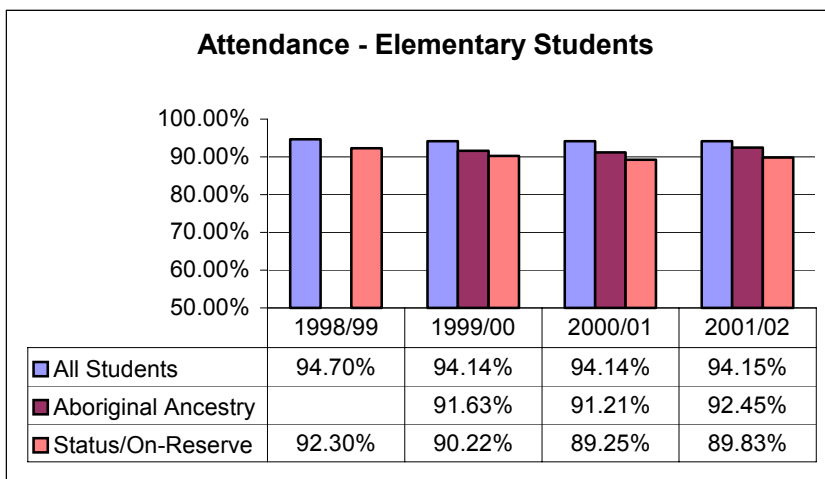
Aboriginal On-Reserve student enrolment saw an increase of 20.0 % over the same time period.



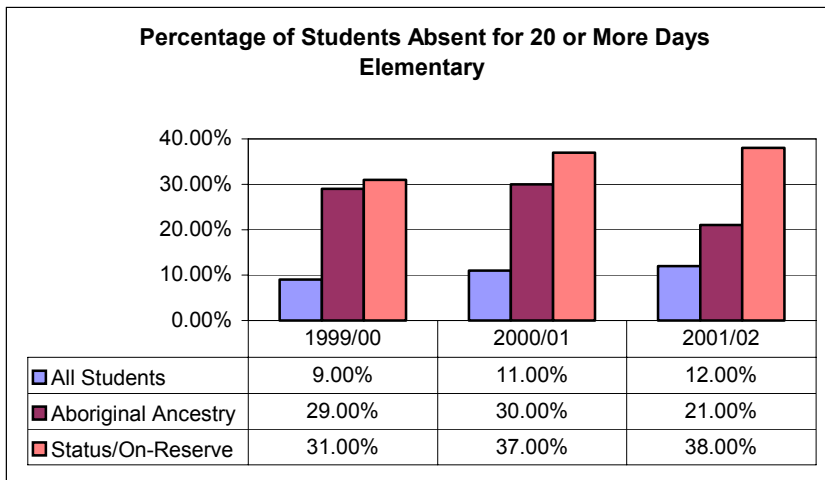
Comments

Since September 1997 the percentage of Aboriginal Ancestry students in School District No. 53 has increased by 1.3 %. The percentage of Status On-Reserve students has risen by 0.4%.

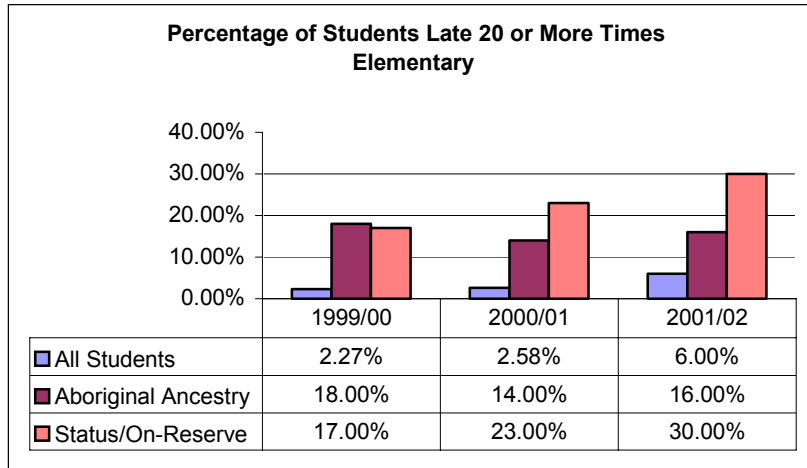
ATTENDANCE



The attendance of Aboriginal Ancestry students improved slightly over the past year but remains below that of the general population. The attendance of Status/On-Reserve students' has decreased slightly over the past four years.

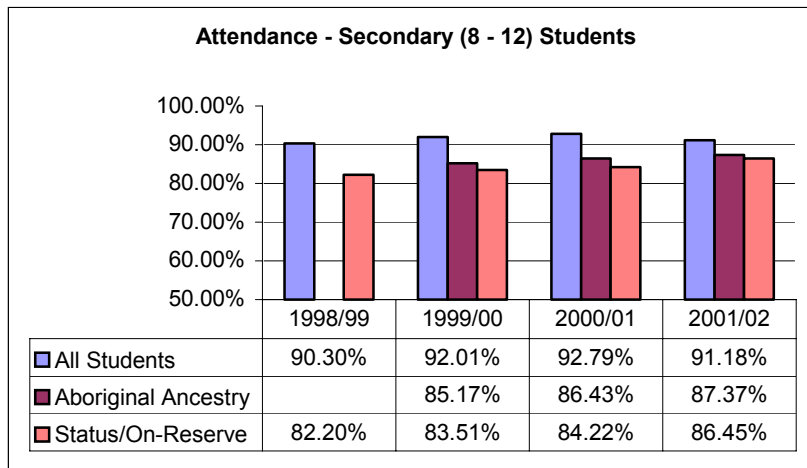


Although the number of students absent for 20 or more days has risen over the past three years, that for Aboriginal Ancestry students has decreased, a positive step. The rate for Status/On-Reserve remains high and continues to be a concern.

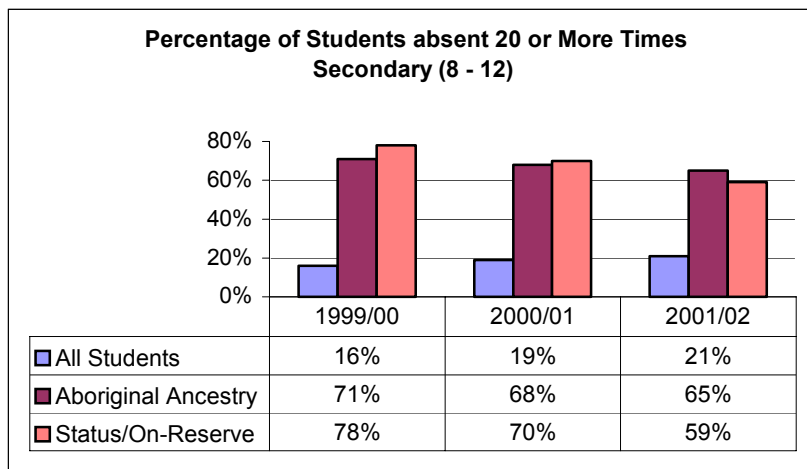


Comments

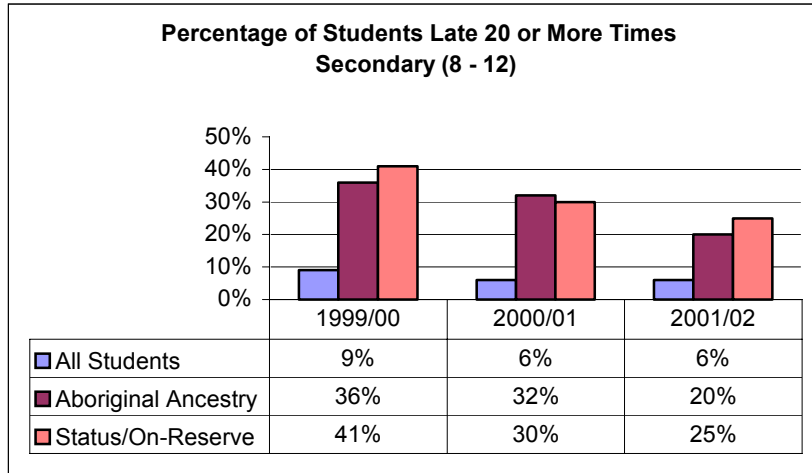
The number of students arriving late for school has generally increased for all categories except Aboriginal Ancestry students, which has stayed fairly constant.



There has been a slight but steady improvement in attendance by all Aboriginal groups at the secondary level.



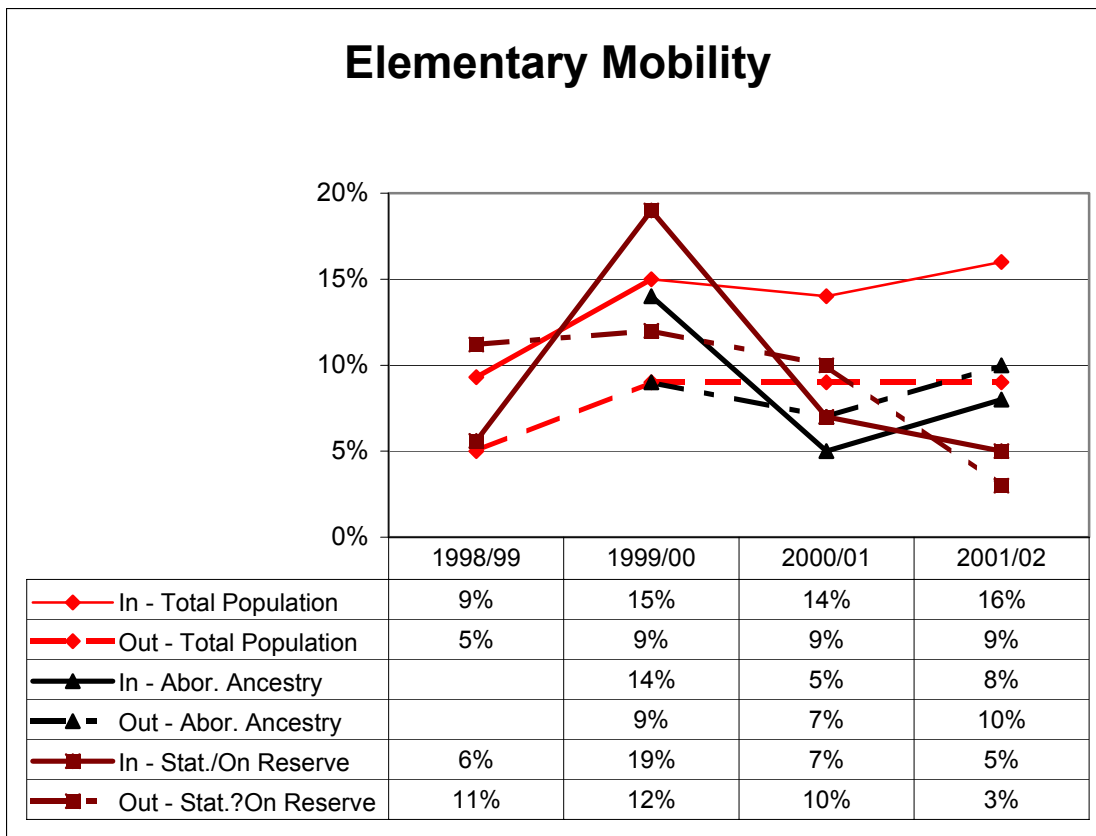
The percentage of students late 20 or more days has improved over the last year for both Aboriginal groups.



Comments

There has been a steady improvement in the number of students late 20 or more times for both Aboriginal groups.

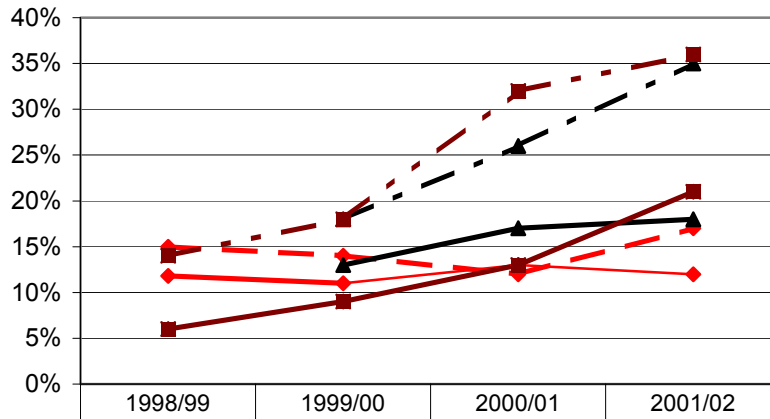
MOBILITY



Mobility is as of September 1st of each year. It is the number of students coming into and leaving the school between September 1 and June 30.

Mobility rates seem to be fairly consistent from year to year for all groups. However, there seems to be an incoming trend (more in than out) for Total population while there is an outgoing trend for Aboriginal groups.

Secondary Mobility

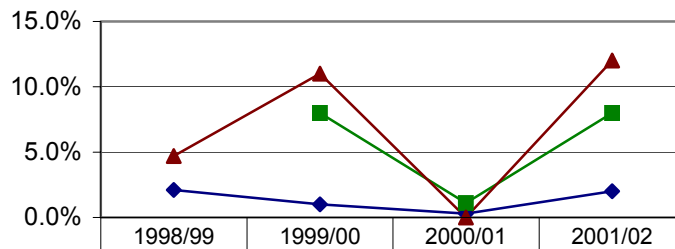


Comments

Secondary mobility for the general population is fairly constant from year to year.

The mobility for the Aboriginal populations, have steadily increased over the past few year with more students leaving the schools than are entering over the school year. Is this a trend that needs to be examined by the schools?

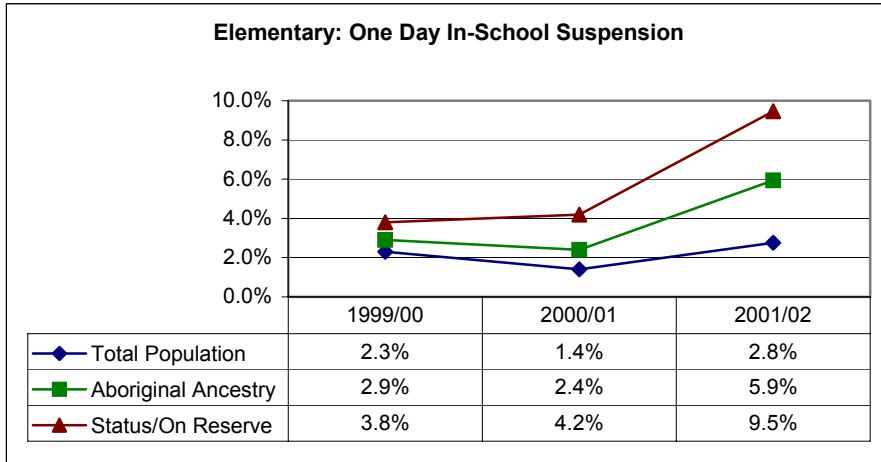
Students Withdrawn From School by an Administrator



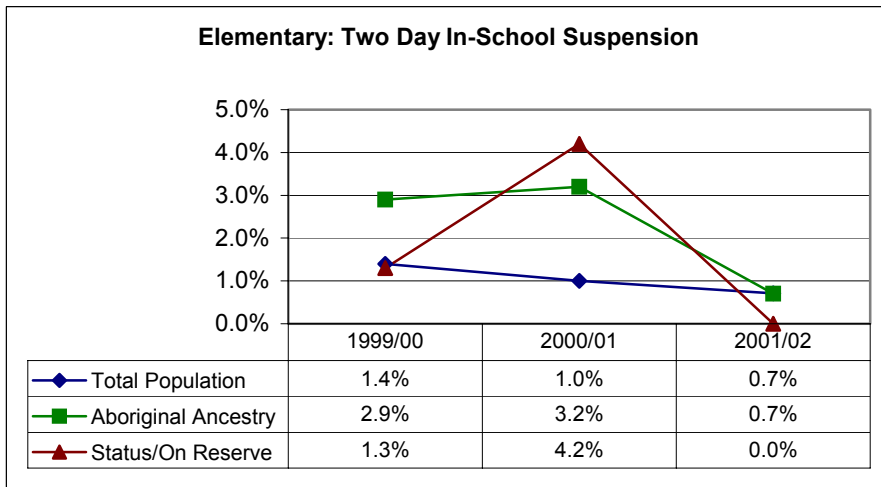
The number of students withdrawn from school by an administrator seems to be sporadic from year to year. The percentage of Aboriginal students withdrawn from school is much higher than that of the general population.

DISCIPLINE

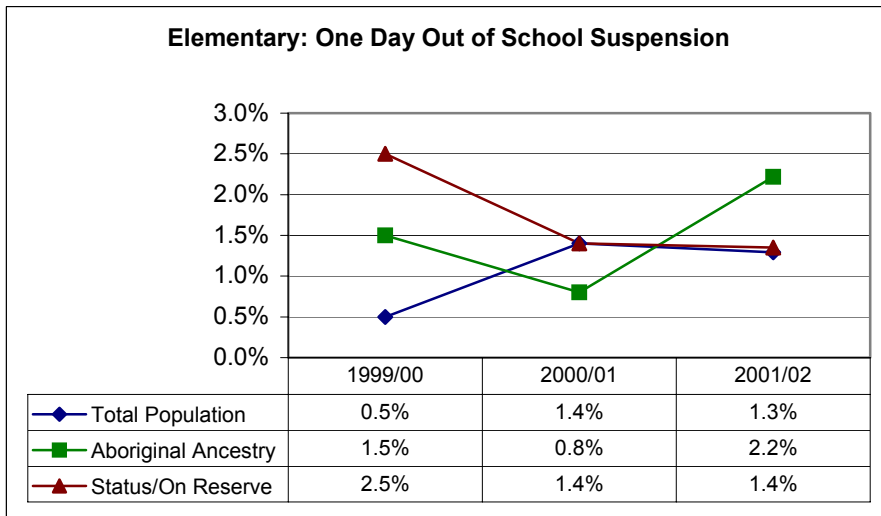
Comments:



It is important to note when you look at Discipline trends that the results can be skewed by a small number of students who repeatedly get suspended. It is not unusual for a student to be represented up to five or six times in this data. The number of repeat offenders for the general population was 20 during the 2001/02 school year. Aboriginal Ancestry had 5 repeat offenders and Status/On Reserve had 4.

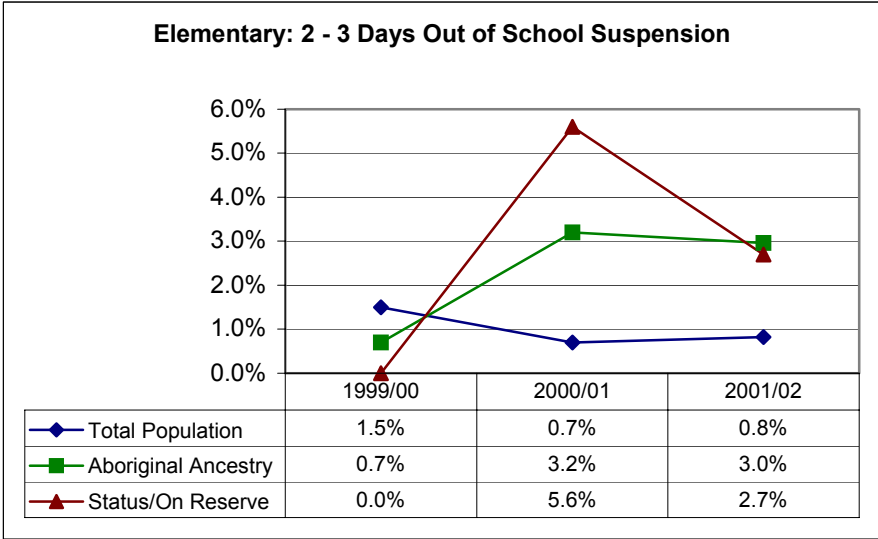


The percentages, therefore, represent the number of disciplinary actions in relation to population numbers and do not represent the actual number of students being disciplined.

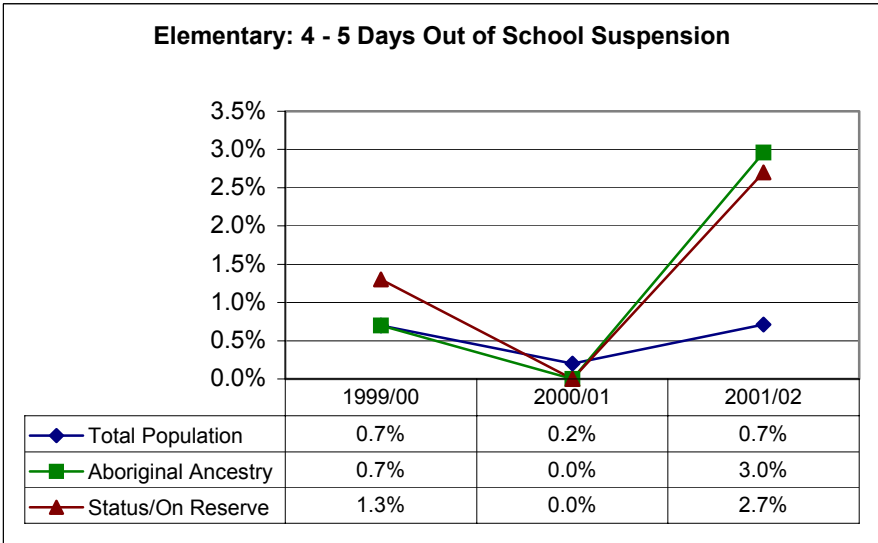


Elementary schools saw an increase in One Day In-School suspensions across all categories but a decrease in Two Day In-School suspensions.

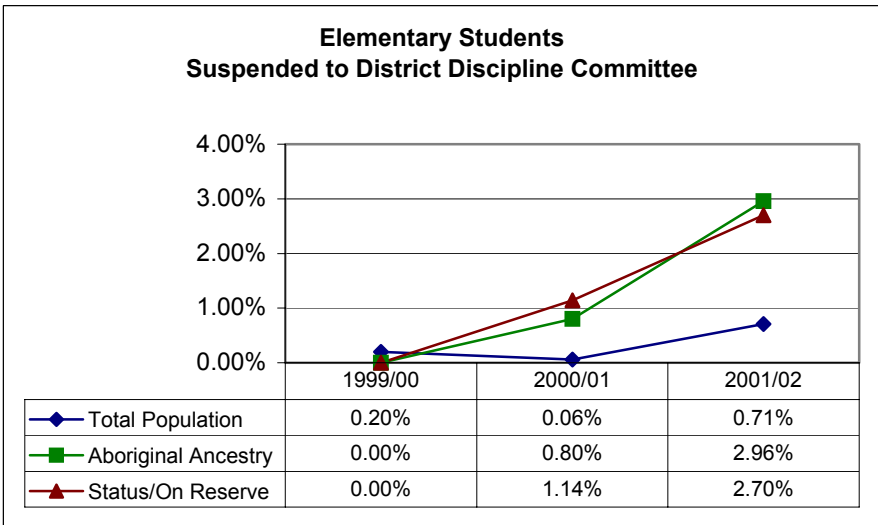
Out of School suspensions showed an increase for both Aboriginal groups. The trend was generally flat for the general population.



Comments:



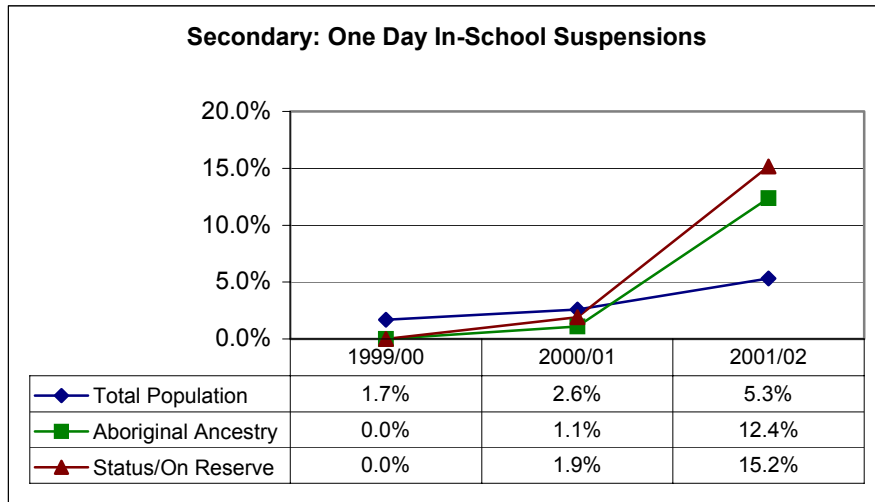
There was an increase in 4 – 5 day suspensions for all groups, particularly sharp for Aboriginal groups.



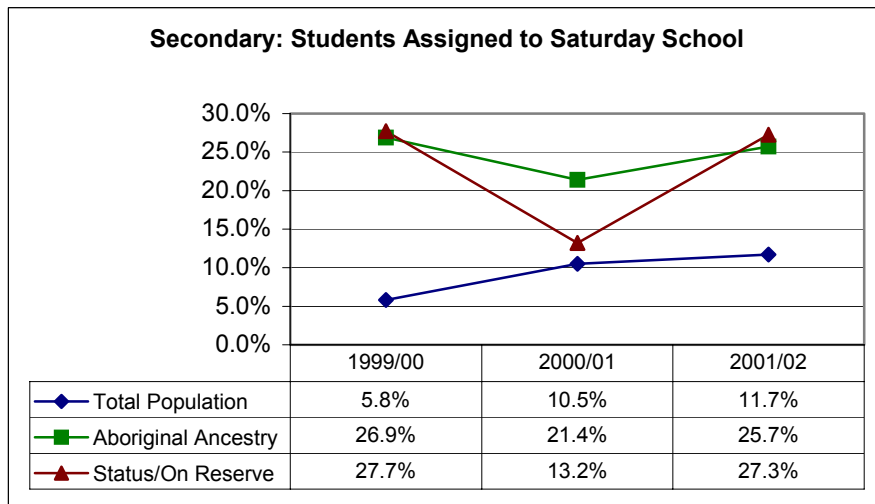
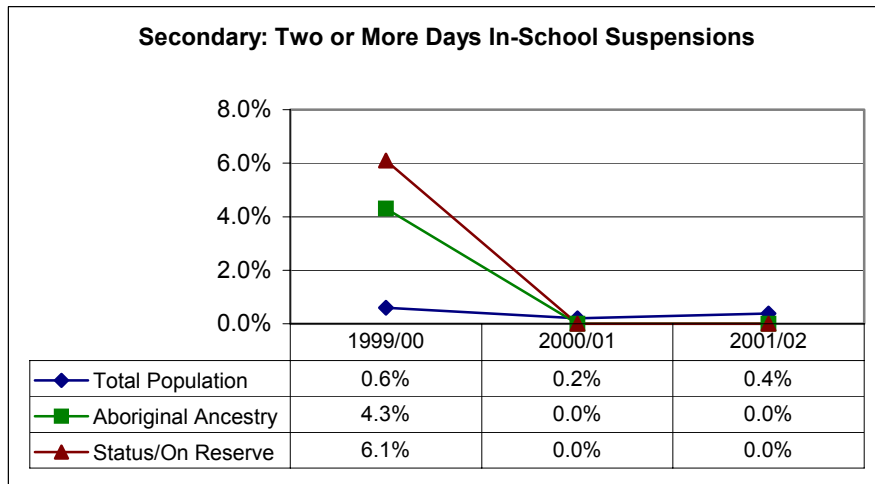
Students suspended to the District Discipline Committee rose sharply.

In all cases, the number of Aboriginal students receiving disciplinary action continues to be over represented.

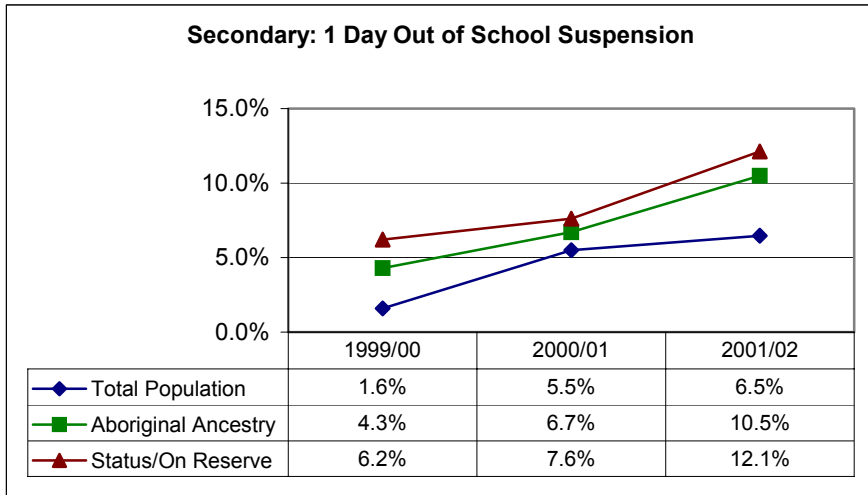
Comments



There was a sharp increase in One Day In-School suspensions across the district. This trend did not occur for Two Day In-School ones. The trend was more pronounced for Aboriginal students.

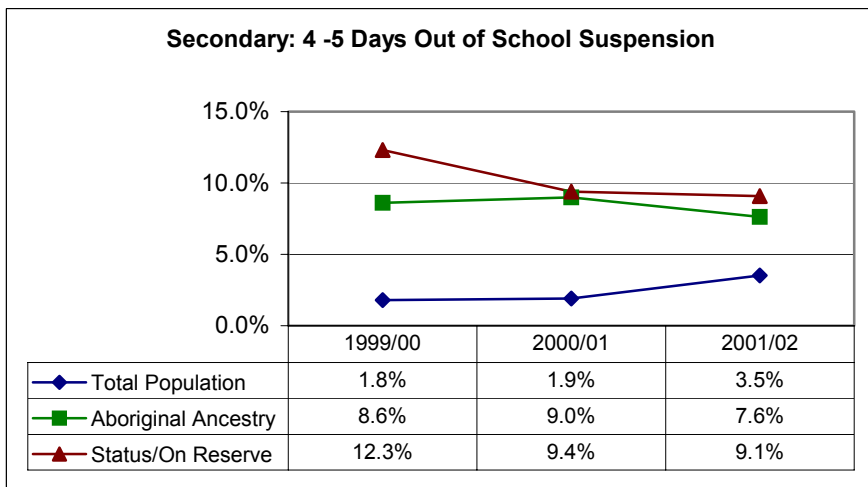
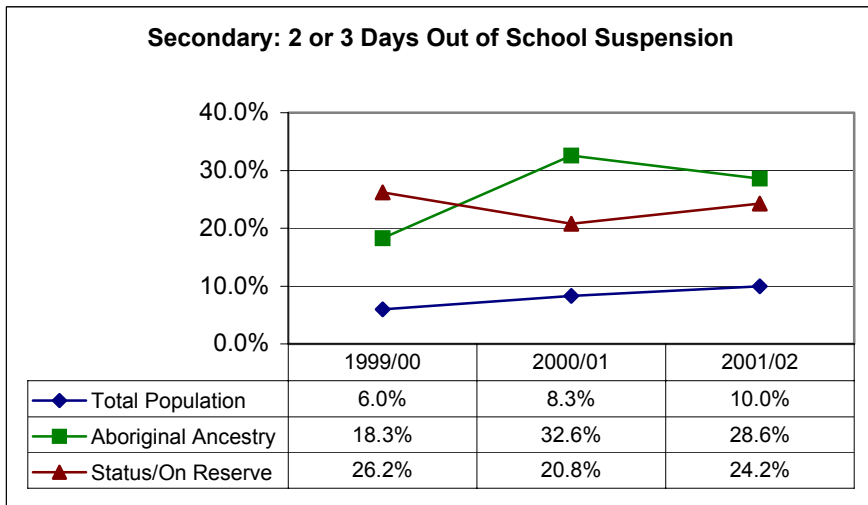


There was a general increase in students assigned to Saturday school.

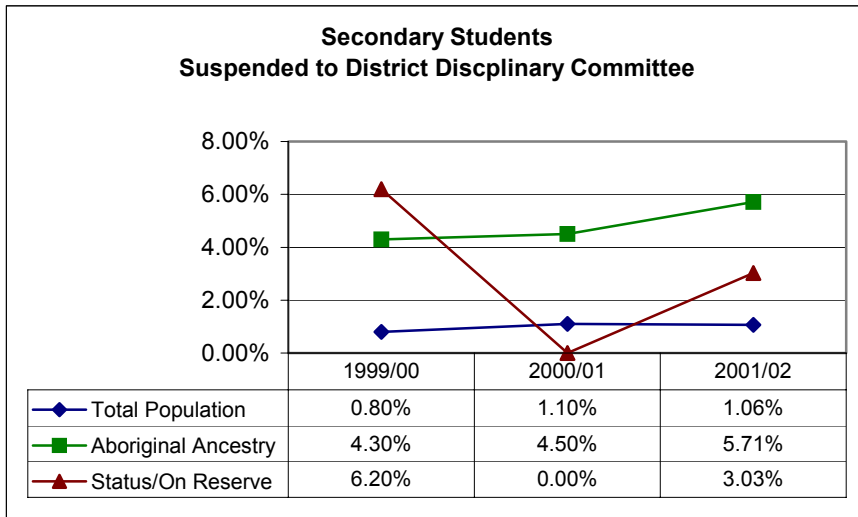


Comments

One Day Out of School suspensions saw a general increase for all groups. Two day Out of School suspensions saw a less pronounced increase for the general population but was down for the Aboriginal students.



There was, again, a downward trend in four and five day suspensions for Aboriginal students while there was an increase for the general population.



Comments

Suspensions to the District Discipline Committee increased for all groups.